

BF30 | UNITIZED CURTAIN WALL SYSTEMS

TECHNICAL DATA

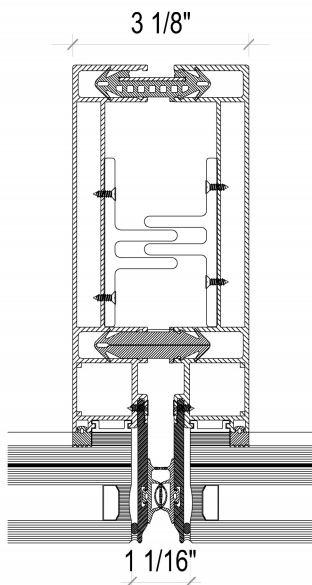
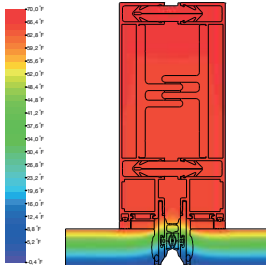
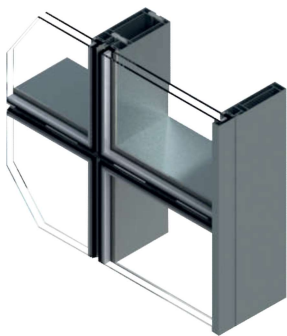
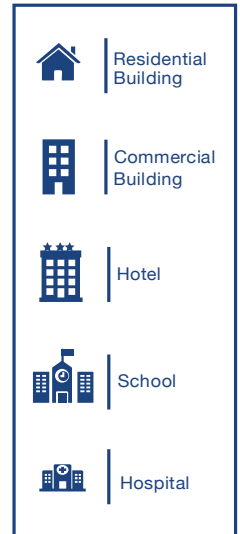
With its wide range scope of design applications BF30 unitized curtain wall offers following and further features:

STANDARD FEATURES

- 3-1/8" frame width
- 6" to 1/2" frame depth
- 1/16" wall thickness
- Thermally broken aluminum profiles
- Air, water and dust sealing gaskets made of EPDM
- Powder coating with all standard RAL colors and various anodized colors
- Qualicoat & Qualanod certified surface treatment applications.
- 1" Insulated glass unit.
- Concealed vents with multi-point locking for openings
- Euro-groove design for hardware versatility
- Stainless steel and aluminum projected hardware
- Hardware options to limit vent access to custodial use

OPTIONAL FEATURES

- Powder coated dual finish (two-tone color) option
- High insulated profile system for better energy efficiency
- Up to 2" Insulated glass with low-e or solar low-e options
- Warmedge spacer and triple IGU to maximize energy efficiency
- Sound insulated profile system for superior OITC ratings
- Bird friendly glazing
- Silicone gaskets
- Allowed the integration of BF64 or BF74 window systems opening
- Motorized concealed opening options



PERFORMANCE VALUES

Air infiltration	<0.06 cfm/ft ² @ 6.24 psf
Water penetration (Static)	15 psf
Water penetration (Dynamic)	15 psf
Wind resistance design	40 psf
Wind resistance overload	60 psf
U-Value	0.27- 0.43 Btu/(h.ft ² .°F)

PERFORMANCE TEST STANDARTS

Air infiltration	ASTM E283
Water penetration	ASTM E331
Structural - Uniform Wind Load	ASTM E330
Thermal transmittance U-Factor	NFRC100, 102, 500; AAMA 1503
Solar Heat Gain Cefficient (SHGC)	NFRC 200
Visible Sound Transmission (STC, OITC)	ASTM E90