

BF25 SKY | SKYLIGHT SYSTEM

Architectural Design Manual

TECHNICAL DATA






With its wide range scope of design application skylight system offers following feature:

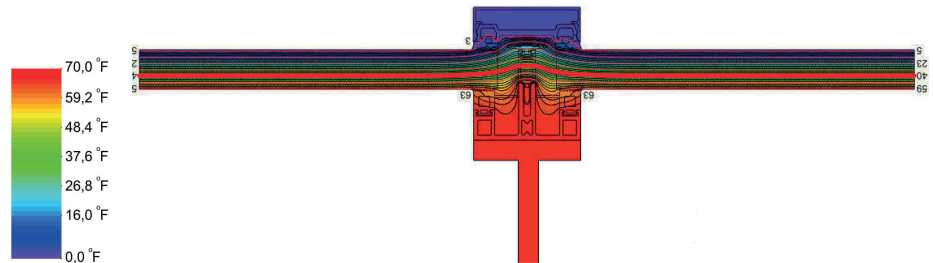
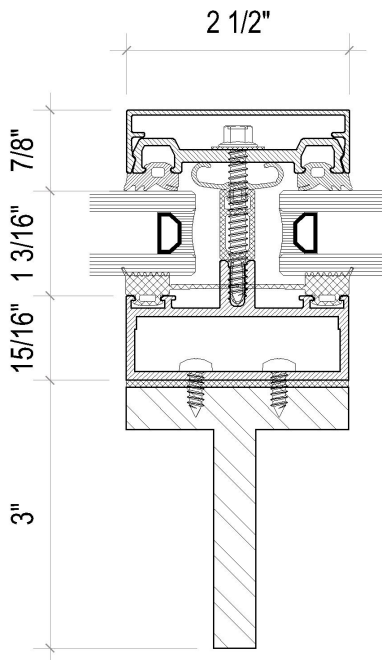
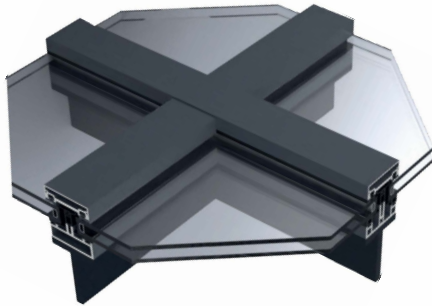
STANDARD FEATURES

- 2-1/2" frame width
- 2-1/2" to 8" frame depth
- 0.1" wall thickness
- Thermally broken aluminum profiles
- Air, water and dust sealing gaskets made of EPDM
- Powder coating with all standard RAL colors and various anodized colors
- Qualicoat & Qualanod certificated surface treatment applications.
- 1" insulated glass unit.

OPTIONAL FEATURES

- Powder coated dual finish (two-tone color) option
- Bird friendly glazing
- High insulated profile system for better energy efficiency
- Up to 2" insulated glass with low-e or solar low-e options
- Warmedge spacer and triple IGU to maximize energy efficiency
- Sound insulated profile system for superior OITC ratings
- Silicone gaskets
- Motorized concealed opening options

	Residential Building
	Commercial Building
	Hotel
	School
	Hospital



PERFORMANCE VALUES

Air infiltration	<0.06 cmf/ft ² @ 6.24psf
Water penetration	12 psf
U-value	0.28 - 0.48 Btu/(h.ft ² .°F)